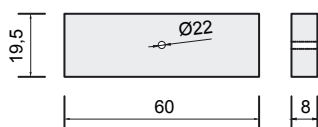
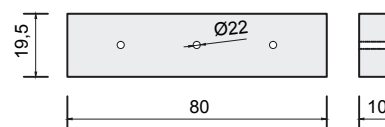


Poz.	Typ elementu	Ciężar elementu [kg]
1	Belka ustojowa B-60	22,5
2	Belka ustojowa B-80	38,0
3	Belka ustojowa B-90	72,0
4	Belka ustojowa B-150	120,0
5	Płyta ustojowa U-85	77,0
6	Płyta ustojowa U-130	156,0
7	Płyta ustojowa P-1	37,0

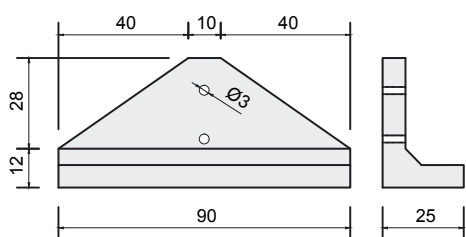
Belka ustojowa B-60



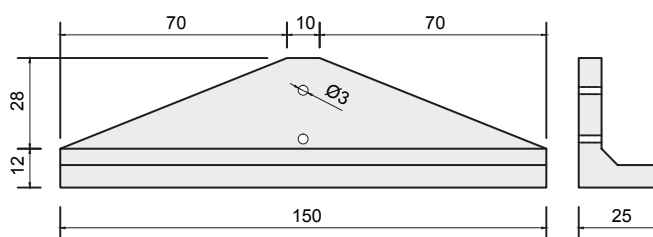
Belka ustojowa B-80



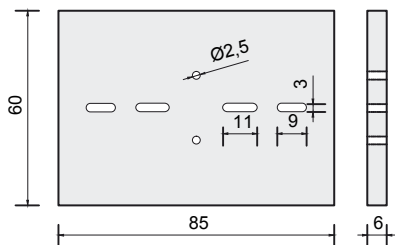
Belka ustojowa B-90



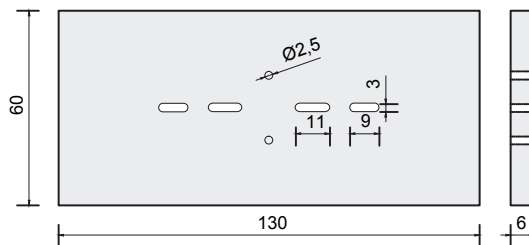
Belka ustojowa B-150



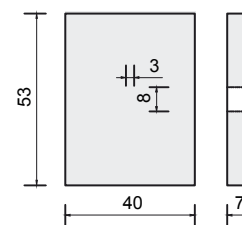
Płyta ustojowa U-85



Płyta ustojowa U-130



Płyta ustojowa P-1



Beton C30/37